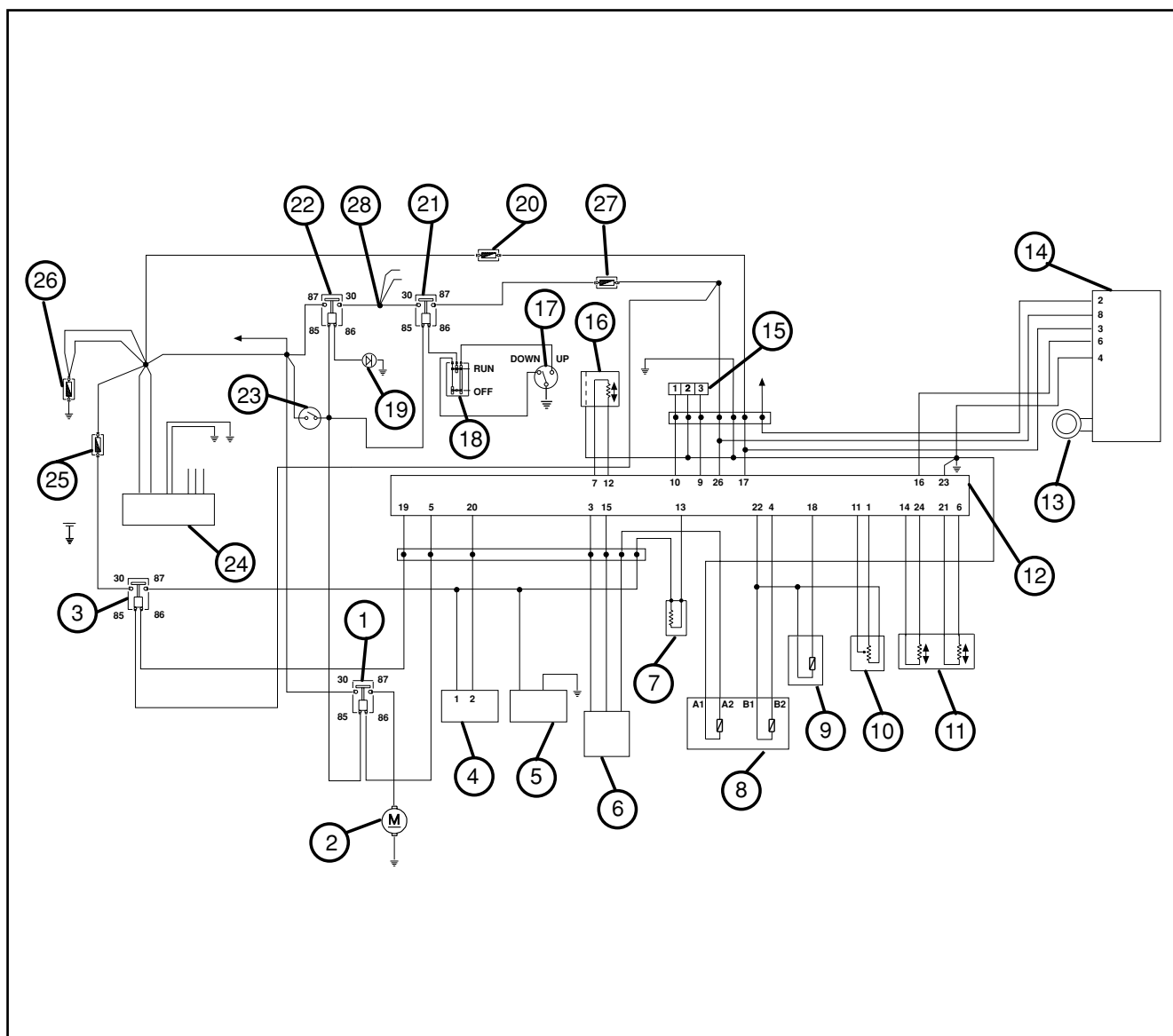


EMS SYSTEM DIAGRAM



- |  |  |
|--|--|
| 1) Electrical fan electromagnetic switch | 20) 3A Fuse                            |
| 2) Electrical fan                        | 21) Engine stop electromagnetic switch |
| 3) Electromagnetic switch                | 22) Services electromagnetic switch    |
| 4) H.V. coil                             | 23) Key switch                         |
| 5) Fuel pump                             | 24) Rectifier regulator                |
| 6) Digital instrument                    | 25) 10A Fuse                           |
| 7) Injector                              | 26) 30A Fuse                           |
| 8) Liquid temp. sensor                   | 27) 5A Fuse                            |
| 9) Air temp. sensor                      | 28) Services                           |
| 10) Throttle potentiometer               |  |
| 11) Stepper motor                        |  |
| 12) EMS control unit                     |  |
| 13) Aerial                               |  |
| 14) Decoder                              |  |
| 15) EMS diagnosis socket                 |  |
| 16) Phase revolutions sensor             |  |
| 17) Deviation stand                      |  |
| 18) Emergency switch                     |  |
| 19) 2A diode                             |  |

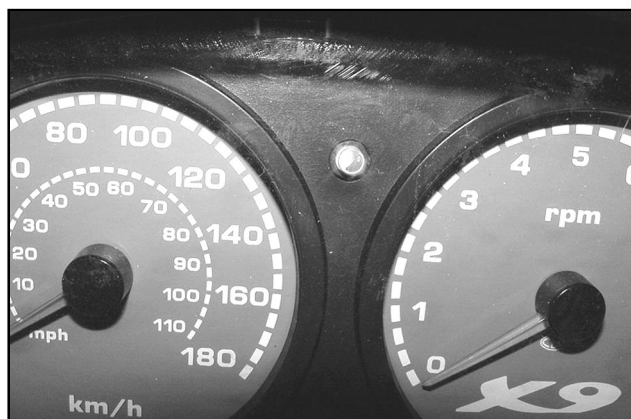
## Fuel injection

### IMMOBILIZER SYSTEM

The EMS system is integrated with an immobilizer-type anti-theft device.

The functions achieved are:

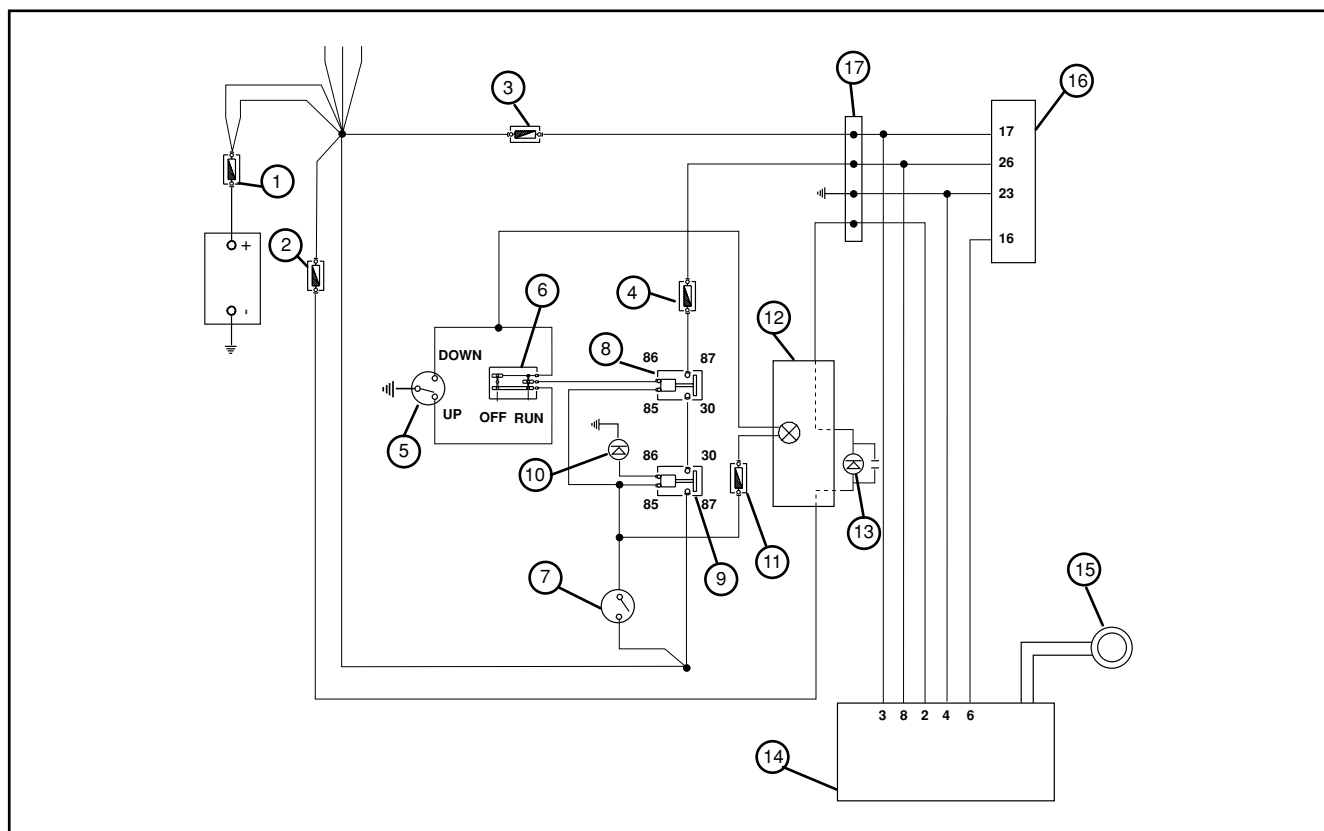
- Starter initialization via key recognition
- Blinking deterrent light



### System components

The system is composed of:

- EMS system control unit
- decoder
- aerial
- master key (red)
- service key (black)
- diagnostic and deterrent LED



1	30A MAIN FUSE	10	DIODE
2	7.5A FUSE	11	7.5A FUSE
3	3A FUSE	12	DIGITAL INSTRUMENT
4	5A FUSE	13	IMMOBILIZ . LED
5	STAND SWITCH	14	DECODER
6	EMERGENCY SWITCH	15	AERIAL
7	KEY SWITCH	16	ECU CONTROL UNIT
8	STOP ELECTROMAGNETIC SWITCH	17	VEHICLE SYSTEM - INJECTION SYSTEM CONNECTOR
9	MAIN ELECTROMAGNETIC SWITCH		